

**MAYLINE®  
C-Files**

Self-contained steel files have integrated caps and can be bolted together for stacking. Drawers have front metal plan depressor and rear hood to keep documents flat and orderly. The drawer fronts are a double-wall construction. Whether the need is for active or archival storage of drawings, C-Files are perfect for the requirement and structurally provide the greatest protection of any plan file on the market. Other colors available for special order. Please note that these are not stock items. **These are drop shipped from the manufacturer only.**

| Description     | No.         | No.          | No.         | No.          | Description   | Ship Wt. | BQ | SRP           |
|-----------------|-------------|--------------|-------------|--------------|---|----------|----|---------------|
|                 | <i>Sand</i> | <i>White</i> | <i>Gray</i> | <i>Black</i> |   |          |    |               |
| 5-drawer files  | 7867CS      | 7867CW       | 7867CG      | 7867CB       | Overall: 40 $\frac{1}{4}$ "w x 28 $\frac{3}{4}$ "d x 15 $\frac{1}{2}$ "h<br>Inside drawer: 37" w x 25 $\frac{3}{4}$ "d x 2" h   | 158 lbs. | 1  | \$1,752.00 ea |
| 10-drawer files | 7977CS      | 7977CW       | 7977CG      | 7977CB       | Overall: 40 $\frac{1}{4}$ "w x 28 $\frac{3}{4}$ "d x 15 $\frac{1}{2}$ "h<br>Inside drawer: 37" w x 25 $\frac{3}{4}$ "d x 5/8" h | 221 lbs. | 1  | 3,697.00 ea   |
| Flush bases     | 7867WS      | 7867WW       | 7867WG      | 7867WB       | For 7867C, 7977C Series   | 14 lbs.  | 1  | 305.00 ea     |
| High bases      | 7877S       | 7877W        | 7877G       | 7877B        | For 7867C, 7977C Series   | 52 lbs.  | 1  | 704.00 ea     |
| 5-drawer files  | 7868CS      | 7868CW       | 7868CG      | 7868CB       | Overall: 46 $\frac{3}{4}$ "w x 35 $\frac{3}{4}$ "d x 15 $\frac{1}{2}$ "h<br>Inside drawer: 43" w x 32 $\frac{3}{4}$ "d x 2" h   | 220 lbs. | 1  | 2,035.00 ea   |
| 10-drawer files | 7978CS      | 7978CW       | 7978CG      | 7978CB       | Overall: 46 $\frac{3}{4}$ "w x 35 $\frac{3}{4}$ "d x 15 $\frac{1}{2}$ "h<br>Inside drawer: 43" w x 32 $\frac{3}{4}$ "d x 5/8" h | 305 lbs. | 1  | 3,853.00 ea   |
| Flush bases     | 7868WS      | 7868WW       | 7868WG      | 7868WB       | For 7868C, 7978C Series   | 16 lbs.  | 1  | 339.00 ea     |
| High bases      | 7878S       | 7878W        | 7878G       | 7878B        | For 7868C, 7978C Series   | 63 lbs.  | 1  | 797.00 ea     |
| 5-drawer files  | 7869CS      | 7869CW       | 7869CG      | 7869CB       | Overall: 53 $\frac{1}{2}$ "w x 41 $\frac{1}{2}$ "d x 15 $\frac{1}{2}$ "h<br>Inside drawer: 50" w x 38 $\frac{3}{4}$ "d x 2" h   | 240 lbs. | 1  | 2,428.00 ea   |
| 10-drawer files | 7979CS      | 7979CW       | 7979CG      | 7979CB       | Overall: 53 $\frac{1}{2}$ "w x 41 $\frac{1}{2}$ "d x 15 $\frac{1}{2}$ "h<br>Inside drawer: 50" w x 38 $\frac{3}{4}$ "d x 5/8" h | 365 lbs. | 1  | 5,211.00 ea   |
| Flush bases     | 7869WS      | 7869WW       | 7869WG      | 7869WB       | For 7869C, 7979 Series  | 20 lbs.  | 1  | 409.00 ea     |
| High bases      | 7879S       | 7879W        | 7879G       | 7879B        | For 7869C, 7979 Series  | 70 lbs.  | 1  | 878.00 ea     |

Flush bases – 4" high  
High bases – 20" high with bookshelf

**Special freight terms apply, please inquire.**

**Items are drop shipped from the manufacturer.**



**Limited Lifetime Warranty  
Limitation based on normal office usage  
and normal wear and tear.**

**SAFCO®  
Steel Flat Files**

Classic modular files featuring electrically-welded heavy-gauge steel construction, double-thick wrap-around corners, integral cap, and sturdy inner frames. Five-drawer files store up to 500 sheets per unit active filing, 750 sheets semi-active, and 1000 sheets inactive. Ten-drawer files allow for easy retrieval of materials with ten separate 1" deep drawers. All files stack securely up to five units high with anti-slip pads



between units to eliminate shifting. Additional features include museum/archival-quality paint finish, steel side roller assembly with case-hardened ball-bearing rollers for smooth drawer operation, rear bumper pads, drawer safety stops, heavy-duty drawer rails for precision alignment, rear drawer hoods, and hinged front depressors. Please note that these are not stock items. **These are drop shipped from the manufacturer only.**

| Description     | No.         | No.          | No.         | No.          | Overall (H x W x D)  | Inside (W x D) | Shpg. Wt. | BQ | SRP           |
|-----------------|-------------|--------------|-------------|--------------|--|----------------|-----------|----|---------------|
|                 | <i>Sand</i> | <i>White</i> | <i>Gray</i> | <i>Black</i> |  |                |           |    |               |
| 5-drawer files  | 4994S       | 4994W        | 4994G       | 4994B        | 16 $\frac{1}{2}$ " x 40 $\frac{3}{8}$ " x 29 $\frac{3}{8}$ " | 37" x 26"      | 160 lbs.  | 1  | \$1,526.00 ea |
| Closed bases    | 4995S       | 4995W        | 4995G       | 4995B        | 6" x 40 $\frac{3}{8}$ " x 26 $\frac{3}{8}$ "                 | 37" x 26"      | 22 lbs.   | 1  | 266.00 ea     |
| High bases      | 4975S       | 4975W        | 4975G       | 4975B        | 20" x 40 $\frac{3}{8}$ " x 29 $\frac{3}{8}$ "                | 37" x 26"      | 37 lbs.   | 1  | 585.00 ea     |
| 5-drawer files  | 4996S       | 4996W        | 4996G       | 4996B        | 16 $\frac{1}{2}$ " x 46 $\frac{3}{8}$ " x 35 $\frac{3}{8}$ " | 43" x 32"      | 195 lbs.  | 1  | 1,768.00 ea   |
| Closed bases    | 4997S       | 4997W        | 4997G       | 4997B        | 6" x 46 $\frac{3}{8}$ " x 32 $\frac{3}{8}$ "                 | 43" x 32"      | 26 lbs.   | 1  | 286.00 ea     |
| High bases      | 4977S       | 4977W        | 4977G       | 4977B        | 20" x 46 $\frac{3}{8}$ " x 35 $\frac{3}{8}$ "                | 43" x 32"      | 43 lbs.   | 1  | 624.00 ea     |
| 5-drawer files  | 4998S       | 4998W        | 4998G       | 4998B        | 16 $\frac{1}{2}$ " x 53 $\frac{3}{8}$ " x 41 $\frac{3}{8}$ " | 50" x 38"      | 250 lbs.  | 1  | 2,093.00 ea   |
| Closed bases    | 4999S       | 4999W        | 4999G       | 4999B        | 6" x 53 $\frac{3}{8}$ " x 38 $\frac{3}{8}$ "                 | 50" x 38"      | 30 lbs.   | 1  | 359.00 ea     |
| High bases      | 4979S       | 4979W        | 4979G       | 4979B        | 20" x 53 $\frac{3}{8}$ " x 41 $\frac{3}{8}$ "                | 50" x 38"      | 48 lbs.   | 1  | 650.00 ea     |
| 10-drawer files | 4986S       | 4986W        | 4986G       | 4986B        | 16 $\frac{1}{2}$ " x 46 $\frac{3}{8}$ " x 35 $\frac{3}{8}$ " | 43" x 32"      | 278 lbs.  | 1  | 3,122.00 ea   |
| Closed bases    | 4997S       | 4997W        | 4997G       | 4997B        | 6" x 46 $\frac{3}{8}$ " x 32 $\frac{3}{8}$ "                 | 43" x 32"      | 26 lbs.   | 1  | 286.00 ea     |
| High bases      | 4977S       | 4977W        | 4977G       | 4977B        | 20" x 46 $\frac{3}{8}$ " x 35 $\frac{3}{8}$ "                | 43" x 32"      | 43 lbs.   | 1  | 624.00 ea     |

Closed bases – 6" high      High bases – 20" high

**Special freight terms apply, please inquire.**

**Items are drop shipped from the manufacturer.**



**SAFCO®  
Plan File Portfolio**

Drawer retrieval is simplified because all related drawings are kept together. Portfolios make transporting drawings easy. 10/box.

| No.  | For Dwg. Size | Use With File No. | BQ | SRP         |
|------|---------------|-------------------|----|-------------|
| 3011 | 24" x 36"     | 4994              | 1  | \$266.00 bx |
| 3012 | 30" x 42"     | 4996/4986         | 1  | 298.00 bx   |

**SAFCO®  
Giant Stack Trays**

Modular stacking trays that stack up to five feet high to form a complete flat filing system. Constructed of high density polyethylene with steel reinforcement for rigid support and strength. Easy to clean. Trays have a 40 lb. load capacity and are ideal for storing matte board, vellum, acetate, drawings, blueprints, and other flat materials. White color. Optional light oak finish wood core vinyl laminate tops available.



Typical set up showing several trays and cap.

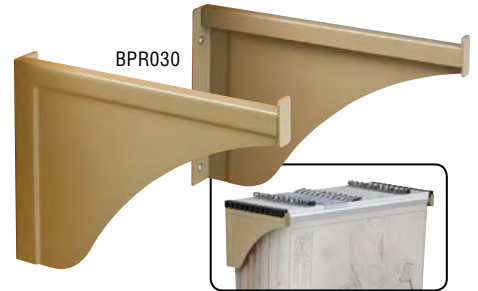
| No.  | Dimensions/Weight  | BQ | SRP         |
|--|--|----|-------------|
| <i>Overall: 3'h x 39" w x 26" d</i>                          |  |    |             |
| 4897   | 2" h x 36 $\frac{1}{2}$ " w x 24 $\frac{1}{4}$ " d, 2-pack | 1  | \$196.00 ea |
| 4896   | Optional laminate top                                      | 1  | 150.00 ea   |
| <i>Overall: 3" h x 45<math>\frac{1}{4}</math>" w x 34" d</i> |  |    |             |
| 4899   | 2" h x 42 $\frac{1}{2}$ " w x 32 $\frac{1}{2}$ " d, 2-pack | 1  | 230.00 ea   |
| 4898   | Optional laminate top                                      | 1  | 165.00 ea   |

**SAFCO®  
Fácil™ Flat File Cabinet**

An economical solution for all non-archival storage needs. Features include nylon ball-bearings, functionally designed label holders, and chrome drawer handles. Drawer capacity is 60 lbs. Unit can be stacked up to two high on closed base and one high on high base. Light Gray. Some assembly required. **Drop shipped.**



| No.   | Description | Dimensions<br>W x D x H | Weight   | BQ | SRP                |
|---|-------------|-------------------------|----------|----|--------------------|
| <i>Small, inside drawers 37" x 25" x 1¼"</i>  |             |                         |          |    |                    |
| 4969  | Flat file   | 40¼" x 26" x 16½"       | 118 lbs. | 1  | <b>\$835.00 ea</b> |
| 4970  | Closed base | 40¼" x 24" x 4¾"        | 13 lbs.  | 1  | <b>120.00 ea</b>   |
| 4971  | High base   | 40¼" x 25¾" x 20½"      | 38 lbs.  | 1  | <b>301.00 ea</b>   |
| <i>Medium, inside drawers 43" x 31" x 1¼"</i> |             |                         |          |    |                    |
| 4972  | Flat file   | 46¼" x 32" x 16¼"       | 150 lbs. | 1  | <b>1,029.00 ea</b> |
| 4973  | Closed base | 46¼" x 30" x 4¾"        | 16 lbs.  | 1  | <b>132.00 ea</b>   |
| 4974  | High base   | 46¼" x 31¾" x 20¾"      | 44 lbs.  | 1  | <b>338.00 ea</b>   |



Binders not included with rack. Sold separately.

**ALVIN®  
Wall Rack for Large Format Documents**

Space-saving vertical filing system consists of two wall-mounted steel brackets from which large document binders are suspended for easy access to hundreds of active documents. Holds 12 large document binders (sold separately). Weight 4 lbs.

- Industrial strength construction, 240 lb. capacity
- Fits binder sizes 18", 24", 30", 36", and 42"
- Attaches to wall at desired height; requires mounting directly to studs or solid surface
- Durable powder-coated finish in barley color
- Multi-lingual packaging and instructions in English, French, and Spanish
- Limited lifetime warranty

|                |      |
|----------------|------|
| No. BPR030     | BQ 1 |
| SRP \$60.00 ea |      |



**ALVIN®  
Large Document Binders/Blueprint Clamps**

A convenient way to store large format documents and blueprints for easy access. Each binder can hold up to 100 prints or 20 lbs. with a secure grip and wide opening jaws for easy loading. For use with all Alvin, Safco, PlanHold, and Mayline rack systems. **Sold by the box of six.**

- Professional grade for office and field use
- Made from high quality extruded aluminum
- Solid steel wing nuts have built-in stops to prevent them from accidental disassembly
- Plastic label holder with blank cardstock included
- Multi-lingual packaging and instructions in English, French, and Spanish
- Well packaged for transportation, **6 per box**
- Limited lifetime warranty

| No.   | Print Width | Overall Length | Box Weight | BQ | SRP                |
|-------|-------------|----------------|------------|----|--------------------|
| BPC18 | 18"         | 20"            | 5 lbs.     | 1  | <b>\$166.00 bx</b> |
| BPC24 | 24"         | 26"            | 7 lbs.     | 1  | <b>189.00 bx</b>   |
| BPC30 | 30"         | 32"            | 9 lbs.     | 1  | <b>216.00 bx</b>   |
| BPC36 | 36"         | 38"            | 10 lbs.    | 1  | <b>265.00 bx</b>   |
| BPC42 | 42"         | 44"            | 12 lbs.    | 1  | <b>289.00 bx</b>   |



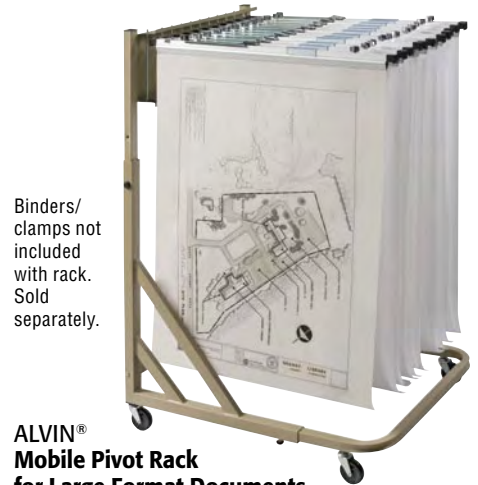
Binders not included with rack. Sold separately.

**ALVIN®  
Wall Pivot Rack for Large Format Documents**

Space-saving vertical filing system consists of a wall-mounted steel frame supporting 12 pivoting brackets that swing freely to allow visibility and easy access to hundreds of active documents. Designed to be interchangeable with systems from other manufacturers. Holds 12 large document binders (sold separately). Weight 18 lbs.

- Industrial strength construction, 240 lb. capacity
- Fits binder sizes 18", 24", 30", 36", and 42"
- Attaches to wall at desired height; requires mounting directly to studs or solid surface
- Durable powder-coated finish in barley color
- Multi-lingual packaging and instructions in English, French, and Spanish
- Limited lifetime warranty

|                 |      |
|-----------------|------|
| No. BPR016      | BQ 1 |
| SRP \$255.00 ea |      |



Binders/clamps not included with rack. Sold separately.

**ALVIN®  
Mobile Pivot Rack for Large Format Documents**

Space-saving vertical filing system for active documents. Consists of a sturdy steel frame supporting 12 pivoting brackets (included) that swing freely to allow visibility and easy access to hundreds of documents, prints, and project files. Mounted on four 3" heavy-duty commercial grade swivel casters, the rack rolls easily wherever needed, making it ideal for office and field use. Designed to be interchangeable with systems from other manufacturers. Holds 12 large document binders (sold separately). Weight 53 lbs.

- Industrial strength construction, 240 lb. capacity
- Fits binder sizes 18", 24", 30", and 36"
- Adjustable height for prints from 24" to 48" long
- Adjustable depth for prints from 18" to 36" wide
- Includes floor glides for non-mobile use
- Durable powder-coated finish in barley color
- Reinforced packaging with internal protection
- Easy to assemble and adjust
- Multi-lingual packaging and instructions in English, French, and Spanish
- Limited lifetime warranty

|                 |      |
|-----------------|------|
| No. BPR026      | BQ 1 |
| SRP \$580.00 ea |      |



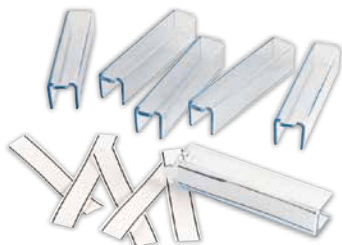
Binders/clamps not included with rack. Sold separately.

**ALVIN®  
Mobile Racks for Large Format Documents**

Space-saving vertical filing system that allows convenient access to hundreds of active documents, prints, and project files. Sturdy steel frames adjust to the length and width of the documents being stored. Mounted on four 3" heavy-duty commercial grade swivel casters, the rack rolls easily wherever needed, making it ideal for office and field use. Large document binders (sold separately) are suspended between support bars at each end.

- Industrial strength construction, 240 lb. capacity
- Fits binder sizes 24", 30", and 36"
- Adjustable height for prints 36" to 48" long
- Easy-grip steel handles for effortless mobility
- Heavy-duty 3" diameter swivel wheels
- Includes floor glides for non-mobile use
- Durable powder-coated finish in barley color
- Multi-lingual packaging and instructions in English, French, and Spanish
- Limited lifetime warranty

| No.       | Binder Capacity | Weight  | BQ | SRP                |
|-----------|-----------------|---------|----|--------------------|
| BPR059-12 | Holds 12        | 32 lbs. | 1  | <b>\$310.00 ea</b> |
| BPR059-18 | Holds 18        | 35 lbs. | 1  | <b>395.00 ea</b>   |



**ALVIN® Large Document Binder/Blueprint Clamp Replacement Label Sleeves**

Label set includes six replacement label sleeves and inserts for BPC24, BPC30, BPC36, and BPC42.

No. BPC-LABEL  
SRP \$10.95 pk **BQ 1**



**ALVIN® Spare Parts for Large Document Binders/Blueprint Clamps**

A convenient assortment of parts to keep on hand. Cast steel wing nuts with zinc coating and cast steel T-bolts are interchangeable with PlanHold, Safco, and Mayline clamps. Contains three pieces each of T-Bolts, wing nuts, wing nut stop screws, jaw springs, and end caps.

No. BPCPARTS  
SRP \$14.95 st **BQ 1**



**ALVIN® Power Wrench**

Designed to tighten large document binders/blueprint clamps when storing or transporting a significant number of prints in a single clamp. To insure a secure grip of documents when hand tightening is not sufficient. Universal fitting accommodates all major brands of clamps and binders.

No. PR10  
SRP \$24.95 ea **BQ 1**



**SAFCO® Drop/Lift Wall Rack**

Can be mounted at any height for customized convenience. Rack extends less than 12" yet holds up to 12 hanging clamps. The clamps simply drop in for storage and lift out for use (clamps not included). Mounting hardware included. Permanent mount 30" to 48". Tropic sand color. 2 lbs.

No. 5030  
SRP \$69.00 ea **BQ 1**



**SAFCO® Pivot Wall Rack**

Stand comes with 12 quick-reference pivot brackets. Rack will hold any length sheet as long as the unit is mounted high enough. Width is 24" and height is 9 1/2". Holds up to 12 hanging clamps (clamps not included). Mounting hardware included. Tropic sand color. 17 lbs.

No. 5016  
SRP \$309.00 ea **BQ 1**



**MAYLINE® Rolling Stand**

Height adjusts to 45 1/4" to 60"; depth 28 1/2" to 43". Includes 12 hangers. Holds up to 1200 sheets. Clamps sold separately. Sand beige color. 55 lbs.

No. 9329H  
SRP \$864.00 ea **BQ 1**



**SAFCO® Mobile Vertical File**

Built to withstand the rigors of a construction environment and is equally useful in design offices. Steel construction with four ball bearing swivel casters (two lock). Width adjusts to fit 24", 30", or 36" hanging clamps (clamps not included). Holds up to 12 clamps that simply drop in and lift out. Height adjusts to hold drawings up to 48" long. Stores up to 1200 3-mil sheets or 240 lbs. Easy set up. 27 1/2" to 39 1/4" w x 16" d x 40" to 52" h. Tropic sand color. 25 lbs.

No. 5059  
SRP \$379.00 ea **BQ 1**



**SAFCO® Mobile Plan Center**

This filing system holds up to 18 hanging clamps (clamps not included) and rolls smoothly on four swivel casters. Measures 51" high, 25 3/4" to 43 3/4" wide, 20 1/2" deep. Width adjusts to accept hanging clamps 24" to 42" long. Tropic sand color. 33 lbs.

No. 5060  
SRP \$559.00 ea **BQ 1**



**MAYLINE® Mobile Plan Center**

Height adjusts 40" to 52"; 16" deep. 12 clamp capacity. Holds up to 1200 sheets. Accepts clamps of 24", 30", and 36" lengths. Clamps sold separately. Sand beige color. 26 lbs.

No. 9429  
SRP \$665.00 ea **BQ 1**



**SAFCO® Mobile Stand**

Rolls on four 3" swivel casters (front two lock). Comes with 12 pivot brackets that move easily from side to side. Adjusts vertically from 43 3/8" to 61 1/8" to accommodate sheets up to 54". Base extends from 27 1/2" to 37 1/2" for balance. Width is 27". Holds up to 12 hanging clamps, any size (clamps not included). Tropic sand color. 47 lbs.

No. 5026  
SRP \$699.00 ea **BQ 1**



**SAFCO® Drop/Lift Cubicle Wall Rack**

Designed for an office environment, this drop/lift wall rack easily fits over a solid partition wall (up to 3/8" thick) to keep current projects handy in a minimum of space. Holds up to 600 sheets in six hanging clamps (clamps not included). Steel rack extends less than 6" from wall, clamps hang 18" from top of wall. Includes mounting hardware. Charcoal color. 4 lbs.

No. 5029  
SRP \$59.00 ea **BQ 1**



**MAYLINE® Pivot Wall Rack**

Mounts on wall to accommodate any sheet size. Includes 12 hangers. 12 clamp capacity. Holds up to 1200 sheets. Clamps sold separately. Sand beige color. 18 lbs.

No. 9309H  
SRP \$375.00 ea **BQ 1**



**MAYLINE® End Resting Wall Rack**

Rack extends 15" from wall. Clamps easily drop in and lift out. 12 clamp capacity. Holds up to 1200 sheets. Clamps sold separately. Sand beige color. 6 lbs.

No. 9319  
SRP \$91.00 ea **BQ 1**



**SAFCO® Standard Hanging Clamps**

Extruded aluminum clamp holds sheets firmly. Each holds an amazing 20 lb. maximum weight, 100 individual sheets. Features black Aculon plastic wing knobs and hanging clip and is guaranteed for life. **Packaged and sold six/box.**

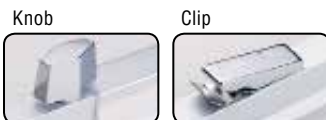
| No.    | Clamp Size | Overall Length | Weight  | BQ | SRP         |
|--------|------------|----------------|---------|----|-------------|
| 5001-6 | 18"        | 19 3/4"        | 6 lbs.  | 1  | \$264.00 bx |
| 5002-6 | 24"        | 25 3/4"        | 7 lbs.  | 1  | 294.00 bx   |
| 5003-6 | 30"        | 31 3/4"        | 8 lbs.  | 1  | 330.00 bx   |
| 5004-6 | 36"        | 37 3/4"        | 9 lbs.  | 1  | 339.00 bx   |
| 5005-6 | 42"        | 43 3/4"        | 10 lbs. | 1  | 369.00 bx   |



**SAFCO® PlanHold/Print-Lock™ Hanging Clamps**

Clamps are fully compatible with all other manufacturer's racks and stands. Constructed of extruded aluminum with polished chrome plated cast alloy wing knobs. Mounting clips are user friendly and will not stick or jam. Wing knobs are guaranteed for life. The entire clamp is warranted for 10 years. Holds 100 sheets or 20 pounds and come with green color label holders. **Packaged and sold six/box.**

| No.    | Size | Weight  | Length  | BQ | SRP         |
|--------|------|---------|---------|----|-------------|
| 4301-6 | 18"  | 6 lbs.  | 19 3/4" | 1  | \$180.00 bx |
| 4302-6 | 24"  | 7 lbs.  | 25 3/4" | 1  | 239.00 bx   |
| 4303-6 | 30"  | 8 lbs.  | 31 3/4" | 1  | 278.00 bx   |
| 4304-6 | 36"  | 9 lbs.  | 37 3/4" | 1  | 341.00 bx   |
| 4305-6 | 42"  | 10 lbs. | 43 3/4" | 1  | 364.00 bx   |



**MAYLINE® Clamps**

Solid steel knobs and spring clip for maximum durability. Each clamp holds 100 sheets. Steel wing knobs turn for easy opening and secure closing. **Packaged and sold six/box.** Limited lifetime warranty.

| No.   | Filing Size | Weight  | BQ | SRP         |
|-------|-------------|---------|----|-------------|
| 93316 | 18"         | 6 lbs.  | 1  | \$218.00 bx |
| 93326 | 24"         | 8 lbs.  | 1  | 248.00 bx   |
| 93336 | 30"         | 9 lbs.  | 1  | 275.00 bx   |
| 93346 | 36"         | 10 lbs. | 1  | 331.00 bx   |
| 93356 | 42"         | 12 lbs. | 1  | 367.00 bx   |

## ALVIN® Open Wall Racks for High Capacity Rolled Blueprint Storage

Organize blueprints or other large rolled materials vertically with this compact, floorspace-saving storage rack. Ideal when needing quick access to rolled documents and drawings. Heavy-duty steel frame with welded posts supports up to 1,200 lbs. of material per rack. Posts are welded at an incline and extend 9" off frame. Overall units are 84"h x 21"w x 11"d and rest on steel feet. Wall brackets that allow space for chair rail or baseboard are included. Finished in a durable, powder-coated, textured black enamel paint. Comes with necessary hardware. 32 lbs.



| No.                    | Description                              | BQ   |
|------------------------|--|------|
| VWR64                  | Five 8" bins, four 6" bins, five 4" bins | BQ 1 |
| VWR65                  | Sixteen 5" bins                          |      |
| <b>SRP \$600.00 ea</b> |  |      |

## HERITAGE™ Wooden Print Rack

Affordable, lightweight option for presenting and sorting artwork. Features a reinforced shelf bed. Overall measurements: 26¼"h x 25¾"w x 20½"d. Assembly required.



|                       |      |
|-----------------------|------|
| No. WPR10             | BQ 1 |
| <b>SRP \$95.00 ea</b> |      |

## HERITAGE™ Steel Print Rack

Strong, attractive steel print rack in a beautiful, black, baked enamel finish. 6" deep shelf bed holds matted or mounted artwork. Four casters for easy mobility in the studio, at an outdoor show, or in a gallery. 33"h with a 19" opening at top. Assembly needed.



|                        |      |
|------------------------|------|
| No. MPR10              | BQ 1 |
| <b>SRP \$180.00 ea</b> |      |

## TESTRITE® Canvas Print Racks

Have easy access, store prints, plans, and organize fine art papers efficiently. Featuring aluminum legs with positive push-pin locks, rubber non-slip caps, and stitched black canvas beds. Folds easily for storage and transport.



| No.                                    | Size        | BQ | SRP         |
|--|-------------|----|-------------|
| <i>Holds 24" x 30" unframed prints</i> |             |    |             |
| PR38                                   | 38"h x 24"w | 1  | \$109.95 ea |
| <i>Holds 33" x 36" unframed prints</i> |             |    |             |
| PR42                                   | 42"h x 36"w | 1  | 122.95 ea   |

**For transparent envelopes and archival sheet protectors see pages 32 and 33.**



## SAFCO® Corrugated Fiberboard Roll Files

An economical way to organize and store drawings, charts, plans, blueprints, maps, and other rolled materials. Corrugated fiberboard shell is two layers thick and reinforced by a steel frame. Square tubes are reinforced with black plastic molding. Dust-resistant doors. Index grids for easy identification of contents. Tropic sand color. 14 lbs.

| No.   | No. of Slots | Tube Size | BQ | SRP         |
|---|--------------|-----------|----|-------------|
| <i>37" tube length (cabinet: 15¾"h x 15¾"w x 37¾"d)</i> |              |           |    |             |
| 3051  | 16           | 3½"       | 1  | \$245.00 ea |
| 3061  | 25           | 2¾"       | 1  | 275.00 ea   |



ARF12



ARF20



## ALVIN® Upright Roll Files

Durable and compact, constructed of corrugated fiberboard. Includes slotted hand-hole. 15" wide x 12" deep, height is 11½" in front and 22" in back. Shipped flat, easy set up. Shipping weight is 4 lbs.

| No.                   | Slots | Tube Size | BQ   |
|-----------------------|-------|-----------|------|
| ARF12                 | 12    | 3¾" x 3¾" | BQ 1 |
| ARF20                 | 20    | 2¾" x 2¾" |      |
| <b>SRP \$85.00 ea</b> |       |           |      |



PHR50-BK



PHR100-BK



PHR200-BK

## HERITAGE™ Print and Poster Holders

Display bins designed to hold up to 100 unframed prints and posters. Welded, heavy gauge, 1" square steel tubing with powder electrostatic, scratch-resistant black finish. Locking casters. Shipped UPS. Assembly required.

| No.   | Size            | BQ | SRP         |
|---|-----------------|----|-------------|
| <i>Holds 26" x 32" unframed prints</i>                                  |                 |    |             |
| PHR50-BK  | 26" x 25" x 32" | 1  | \$227.00 ea |
| <i>Holds 32" x 40" unframed prints</i>                                  |                 |    |             |
| PHR100-BK   | 38" x 25" x 32" | 1  | 259.00 ea   |
| <i>Double print – holds 17" x 26" unframed prints on bottom and top</i> |                 |    |             |
| PHR200-BK   | 22" x 24" x 41" | 1  | 319.00 ea   |



3079



3081F

## SAFCO® Upright Roll Files

Compact yet durable, files are constructed of corrugated fiberboard and reinforced with plastic molding for extra-long durability. Includes slotted hand hole and four non-slip rubber feet. Finished in a subtle walnut woodgrain. 15" wide x 12" deep, height is 12" in front and 22" in back. Shipped flat but easily sets up in minutes. 4 lbs.

| No.   | Slots | Tube Size | BQ | SRP        |
|-------|-------|-----------|----|------------|
| 3079  | 12    | 3¾" x 3¾" | 1  | \$77.00 ea |
| 3081F | 20    | 2¾" x 2¾" | 1  | 80.00 ea   |

## ADVANCED ORGANIZING SYSTEMS Manager Rolled Storage

Economical solution to organizing plans in office or permanent storage. Sturdy, stackable, attractive corrugated cardboard with reinforced bottom. Gray lettering on white background. Side handles with identification labels on interior and exterior. 16"w x 16"l.



| No.   | Dimensions | BQ | SRP        |
|---|------------|----|------------|
| <i>(16) 4" x 4" slots with removable partitions</i> |            |    |            |
| MGR-25  | 25"h       | 1  | \$83.50 ea |
| MGR-37  | 37"h       | 1  | 90.25 ea   |
| <i>(9) – 5¼" x 5¼" slots</i>                        |            |    |            |
| MGR-25-9  | 25"        | 1  | 83.50 ea   |
| MGR-37-9  | 37"        | 1  | 90.25 ea   |



## SAFCO® Mobile Roll Files

Grandstand design allows rolls of various sizes to be stored upright in one file with easy access. Compartments are edged with a protective plastic molding to keep edges from wearing. Solid wood-core product with a long-wearing textured putty vinyl laminated finish. 2" swivel casters offer instant mobility. Assembly required.

| No.  | Slots | Slot Dim. | Ship Wt. | BQ | SRP         |
|--|-------|-----------|----------|----|-------------|
| <i>Overall dimensions: 23¼"h x 15¼"w x 13¼"d</i> |       |           |          |    |             |
| 3042   | 12    | 3¾"sq.    | 20 lbs.  | 1  | \$230.00 ea |
| 3082   | 20    | 2¾"sq.    | 21 lbs.  | 1  | 236.00 ea   |
| <i>Overall dimensions: 28¾"h x 30½"w x 15¾"d</i> |       |           |          |    |             |
| 3045   | 8     | 7"sq.     | 46 lbs.  | 1  | 379.00 ea   |
| 3043   | 21    | 3¾"sq.    | 49 lbs.  | 1  | 390.00 ea   |
| 3083   | 50    | 2¾"sq.    | 55 lbs.  | 1  | 421.00 ea   |



**ALVIN®  
Wire Bin Roll File**

Twenty 4" x 4" openings make this heavy-duty storage bin an ideal organizer for rolled maps, plans, drawings, and tubes. The four swivel casters give it high mobility. Constructed of black plastic-coated heavy-gauge steel rods. Overall dimensions: 30"h x 22"w x 18"d. Assembly required. Shipping weight 11 lbs.

**No. WRF40  
SRP \$76.00 ea BQ 1**



**ALVIN®  
Step-Design Roll File**

Unique step-design base includes twenty-four 3½" x 3½" openings for easy access to rolled maps, plans, drawings, and tubes. The four swivel casters give it high mobility. Constructed of white plastic-coated heavy-gauge steel rods. Includes custom-fitted bottom dust protector. Overall dimensions: 32"h x 21"w x 14"d. Assembly required. Shipping weight 15 lbs.

**No. WSF36  
SRP \$96.00 ea BQ 1**



**ALVIN®  
Roll File Cart**

Heavy-duty storage bin contains twenty-four 3½" x 4" openings and can accommodate up to a 3½" tube. The four swivel casters give it high mobility. Constructed of white plastic-coated heavy-gauge steel rods. Overall dimensions: 28"h x 24½"w x 17"d. Assembly required. Shipping weight 15 lbs.

**No. WTF35  
SRP \$65.00 ea BQ 1**



**PLAN TABS  
Organization System**

Professional organization for building plans. No fumbling, flipping pages, scanning, or searching. Plan Tabs give everyone on site quick and easy color-coded access to the information they need. Each sheet labels an entire set of plans, with 22 unique tabs to cover every type of plan page. Flexible tabs fold over and adhere to both sides of the page for field-proven durability. Double-sided design ensures that pages can easily be found from front or back. Perfect for both residential and commercial projects. Scored and rounded for easy application. Three blank customizable tabs. 33 total tabs per sheet. Eight sheets per set. Sheet size is 12" x 9½".

**No. PT08  
SRP \$45.00 pk BQ 1**



**ALVIN®  
Wire Bin Roll File**

Twelve 5½" x 5½" openings make this heavy-duty storage bin an ideal organizer for rolled maps, plans, drawings, and tubes. The four swivel casters give it high mobility. Constructed of black plastic-coated heavy-gauge steel rods. Overall dimensions: 30"h x 24"w x 18"d. Assembly required. Shipping weight 11 lbs.

**No. WRF55  
SRP \$76.00 ea BQ 1**



**ALVIN®  
King-Size Roll File**

Four 9" x 14" openings make this heavy-duty storage bin an ideal organizer for rolled maps, plans, drawings, and tubes. The four swivel casters give it high mobility. Constructed of white plastic-coated heavy-gauge steel rods. Overall dimensions: 26"h x 28"w x 18"d. Assembly required. Shipping weight 15 lbs.

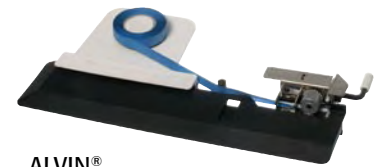
**No. WRF38  
SRP \$109.00 ea BQ 1**



**SAFCO®  
Tubular Steel Wire Roll Files**

Economical, lightweight tubular steel frame with chrome plated grids, rolls easily to point-of-use on twin wheel casters (two lock). Square design provides easy access and removal of materials. Holds 12 tubes, 3¾" x 3¾" grid size. 18¼"w x 14¼"d x 233/8"h, overall size. Light gray finish. Assembly required.

**No. 3090  
SRP \$115.00 ea BQ 1**



**ALVIN®  
Reinforcer Edging Machine**

An easy-to-use system that protects important drawings and documents by applying edge-binding tapes. Made of high-impact plastic, the reinforcer clamps onto any table or work surface, adjusts for paper thickness, and adapts to a variety of edge-binding tapes. A stainless steel tape trimmer neatly trims tape.

**No. 5499  
SRP \$249.00 ea BQ 1**



**SAFCO®  
MasterFile 2 Carrier Strips**

Strips are self-adhesive and can be cut into one hundred 24" strips, eighty 30" strips, or fifty 48" strips. Each has pre-printed I.D. blocks. Available in film laminate or transparent polyester.

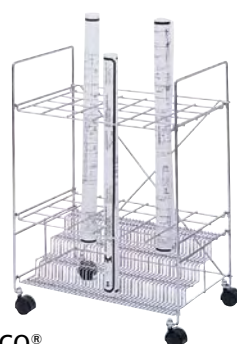
| No.  | Description                        | BQ | SRP         |
|------|------------------------------------|----|-------------|
| 6551 | Film laminate strips, 2¼"w x 217'l | 1  | \$168.00 ea |
| 6552 | Polyester strips, 2¼"w x 217'l     | 1  | 180.00 ea   |
| 6553 | Polyester strips, 2½"w x 216'l     | 1  | 168.00 ea   |



**ALVIN®  
Wire Bin Roll File**

Four 8" x 8" openings make this heavy-duty storage bin an ideal organizer for rolled maps, plans, drawings, and tubes. The four swivel casters give it high mobility. Constructed of white plastic-coated heavy-gauge steel rods. Includes custom-fitted bottom dust protector. Overall dimensions: 30"h x 17"w x 17"d. Assembly required. Shipping weight 10 lbs.

**No. WRF34  
SRP \$82.00 ea BQ 1**



**SAFCO®  
Chrome Wire Roll Files**

Attractive chrome plated units are constructed from heavy-gauge steel rod. Four swivel casters allow easy mobility to point-of-use. Grandstand design provides easy identification of contents. Holds 24 tubes, 3½" x 3½" grid size. 22½"w x 14½"d x 32¼"h, overall size. Unfold unit and drop in base and grids for simple assembly.

**No. 3089  
SRP \$210.00 ea BQ 1**



**ALVIN®  
Reinforced Edge-Binding Tapes**

Made from a tear-proof PVC material that protects and color-codes valuable drawings and documents. Rolls are 1½" wide by 80 feet long and have a core size of 1½". **Packaged and sold 10/bx.**

| No.   | Color |
|-------|-------|
| 121BK | Black |
| 121BL | Blue  |
| 121RD | Red   |
| 121WT | White |

**SRP \$110.00 bx BQ 1**